

97 mitsubishi eclipse manual transmission



File Name: 97 mitsubishi eclipse manual transmission.pdf

Size: 3142 KB

Type: PDF, ePub, eBook

Category: Book

Uploaded: 8 May 2019, 23:51 PM

Rating: 4.6/5 from 640 votes.

Status: AVAILABLE

Last checked: 5 Minutes ago!

In order to read or download 97 mitsubishi eclipse manual transmission ebook, you need to create a FREE account.

[**Download Now!**](#)

eBook includes PDF, ePub and Kindle version

[Register a free 1 month Trial Account.](#)

[Download as many books as you like \(Personal use\)](#)

[Cancel the membership at any time if not satisfied.](#)

[Join Over 80000 Happy Readers](#)

Book Descriptions:

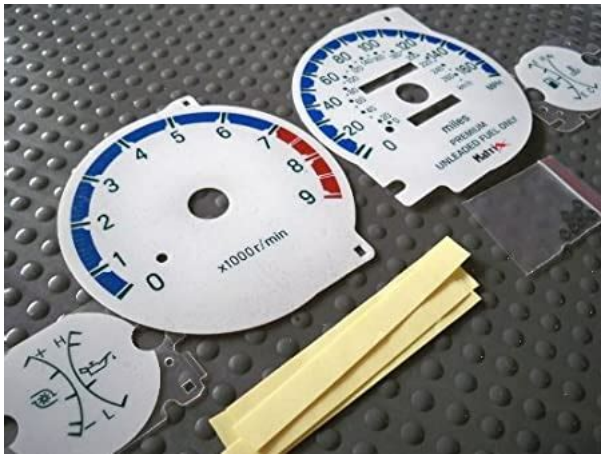
We have made it easy for you to find a PDF Ebooks without any digging. And by having access to our ebooks online or by storing it on your computer, you have convenient answers with 97 mitsubishi eclipse manual transmission . To get started finding 97 mitsubishi eclipse manual transmission , you are right to find our website which has a comprehensive collection of manuals listed.

Our library is the biggest of these that have literally hundreds of thousands of different products represented.



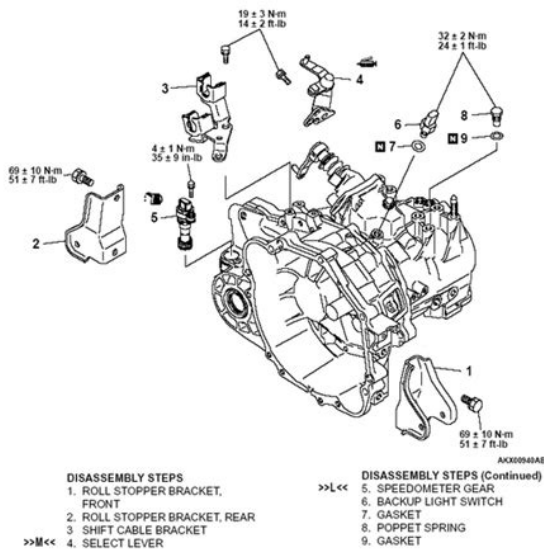
Book Descriptions:

97 mitsubishi eclipse manual transmission



Our payment security system encrypts your information during transmission. We don't share your credit card details with thirdparty sellers, and we don't sell your information to others. Please try again. Please try again. Please install in a professional shop for the best results. In order to navigate out of this carousel please use your heading shortcut key to navigate to the next or previous heading. Full content visible, double tap to read brief content. Register a free business account. Please try your search again later. To calculate the overall star rating and percentage breakdown by star, we don't use a simple average. Instead, our system considers things like how recent a review is and if the reviewer bought the item on Amazon. It also analyzes reviews to verify trustworthiness. For the CUV, see Mitsubishi Eclipse Cross. They were built during Mitsubishi Motors close relationship with Chrysler Corporation. Their partnership was known as DiamondStar Motors DSM. In Japan, the first two generations were sold at a specific Japanese retail chain called Mitsubishi Car Plaza. The third generation 3G shared a redesigned platform with the Chrysler Sebring and Dodge Stratus. Four trim levels were available; all were frontwheel drive except the GSX which was allwheel drive. The GS Turbo and GSX were equipped with turbocharged engines. The most notable is that the 1990/1991 models have popup headlights, whereas the later model years do not. The Eclipse was revised for the 1995 model year as the second generation. AWD models were not available until halfway through the first model year. This was for the purpose of offsetting the additional weight of the AWD mechanism approximately 2,930 lbs Vs 2,570 lbs GVW. However, 1991 and later years of both turbo models standardized on the 195 hp version 4G63T. <http://www.judemusic.nl/fckdata/epson-4800-pro-manual.xml>

- **97 mitsubishi eclipse manual transmission fluid, 1997 mitsubishi eclipse automatic transmission, 1997 mitsubishi eclipse manual transmission fluid, 1997 mitsubishi eclipse manual transmission, 1997 mitsubishi eclipse automatic transmission problems, 1997 mitsubishi eclipse gst manual transmission for sale, 1997 mitsubishi eclipse gsx manual transmission, 97 mitsubishi eclipse manual transmission, 97 mitsubishi eclipse manual transmission parts, 97 mitsubishi eclipse manual transmission diagram, 97 mitsubishi eclipse manual transmission system, 97 mitsubishi eclipse manual transmission fluid, 97 mitsubishi eclipse manual transmission manual, 97 mitsubishi eclipse manual transmission for sale, 97 mitsubishi eclipse manual transmission reviews, 97 mitsubishi eclipse manual transmission kit.**



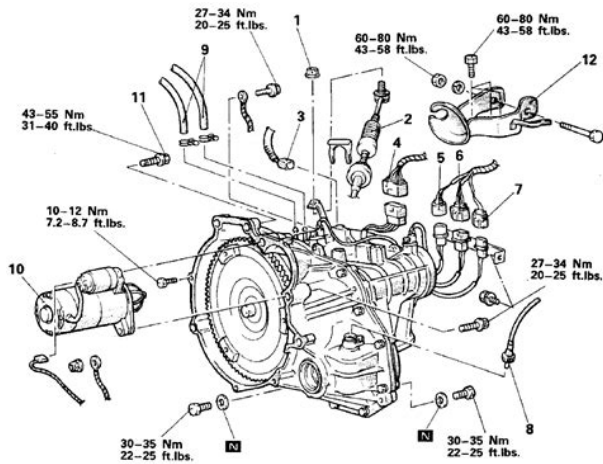
AWD models have a different transmission which includes a limitedslip center differential and output shaft for a transfer case, which drives the rear differential also available as limitedslip and halfshafts. The 4G63 is composed of an iron engine block and aluminum cylinder head and is equipped with 2 balance shafts for smooth operation. The turbocharged 4G63 engine received an internal update during the 1992 model year. The engines built from 1989 through April 1992 have 6bolt motors. Beginning in May 1992, Mitsubishi revised the engine to a 7bolt design. The bolts refer to the number of bolts on the flywheel that connect to the crankshaft. The original 6bolt design is generally regarded as a stronger engine due to the bolt design as well as thicker connecting rods. The second generation car maintained the market focus of the first generation car but had numerous changes to appeal to a broader market. A convertible model, named the Eclipse Spyder, was introduced in 1996 offered in two trim levels; the GS and the GST. The Spyder GS was powered by a 2.4L I4 naturally aspirated 4G64 engine. The Spyder GST was fitted with Mitsubishi's turbocharged 4G63 engine. The GSX model was also powered by this engine but with the addition of a high performance all wheel drive system. It was also updated for more power as compared to the previous generation 210 hp 157 kW vs 195 hp 145 kW. The naturally aspirated cars had two different I4 engines depending on the market they were produced for. The US version engines produced 140 hp, found only in the RS and GS trims, and were a modified version of the Chrysler Neon engine, the 420a, manufactured by Chrysler and delivered to and installed at the Diamond Star Motors facility. The European market engines were a naturally aspirated 4G63 with 141 hp 105 kW; 143 PS. <http://daiduongcompany.com.vn/uploads/userfiles/epson-460-projector-manual.xml>



International market Eclipses made less horsepower than their Japanese domestic market relatives when equipped with the 4G63 210 hp 157 kW, 154 hp 115 kW, due to emissions regulations at the

time. It also included the leather interior package, accented exhaust exit, and hoopstyle spoiler that were available as standard equipment on GST and GSX models. The special edition package was only offered with the 420A engine. It used a naturally aspirated Mitsubishi 4G63 motor, similar to what was available in the 1G, unique sideview mirrors, and amber rear turn signals. The front grille opening was given a more aggressive profile. The headlights were given a sharper slant on the inner edges, and the previous allchrome fixture interior changed to a black interior with chrome reflector inserts. The driving lights were revised from a reflector type to a smaller projection type. The rear bumper cap was altered and had the reverse lights restyled and moved out into the bumper fascia, away from their original central position by the license plate bracket. The GST coupe and GSX received a large rear spoiler. The European variant of the GS had a naturally aspirated, DOHC 16 valve 4G63 engine producing 150 HP. The Mitsubishi motors are mounted in the same orientation as the first generation cars. The 420A powered cars had the engine mounted on the right side of the car, and further back in the chassis. AWD models had a similar transmission to the first generation car. All have cast iron blocks with aluminum cylinder heads. This was done to minimize turbo lag, which was an undesirable trait for massmarket appeal in the U.S. These changes led to increased horsepower and torque vs. The intake ports on the head and runners of the intake manifold are also larger on the 1G. They also have larger crankshaft bearing journals to allow better lubrication.

Because they look similar, it is important to note that the 1990-1994 cylinder head is more on the side of high air volume, while the 1995-1999 cylinder head is more on the side of high air velocity. The crankshaft is more precisely shaved and cut compared to previous years. It is identical to that used in the Mitsubishi Lancer Evolution, which was not yet sold in North America until 2003. Although originally deactivated to protect the drivetrain, it included advanced features such as launch control, boost control, adjustable revlimit, fuel system control and even fuel and boost map selection for certain Mitsubishi Heavy Industries turbochargers. The transfer case itself did not leak but rather the brass plug in the center of the transfer case yoke would leak. There were a variety of symptoms however the most common symptom of crankwalk is the clutch pedal would stick to the floor upon making a left turn. If crankwalk occurred, it typically meant engine failure. In 1998, Mitsubishi revised manufacturing processes to correct the issue. The suspension setup was adjusted to provide a softer and more compliant ride quality. In late 2001, power of the GT trim was lowered to 200 hp 149 kW as a result of tightened emission standards forcing MMNA to adopt the California emissions standards for all variants of the car, rather than selling independent Fed Spec and Cali Spec versions. This vehicle included an engine with a 10:1 compression ratio, revised camshaft profile and an improved Mitsubishi Variable Induction Management MVIM air intake system that gave the car an extra 10 hp 7.5 kW and a slightly improved power curve. On the interior, the gauge face changed, and the door panels were also redesigned. Newly designed fivespoke chrome wheels were offered with the GT and GTS trims. All trim levels besides RS and the Spyder came with an automatic tilt and retracting sunroof. All models were FWD. The GTS trims were introduced for the 2003 model year. This engine produced 210 hp 157 kW.

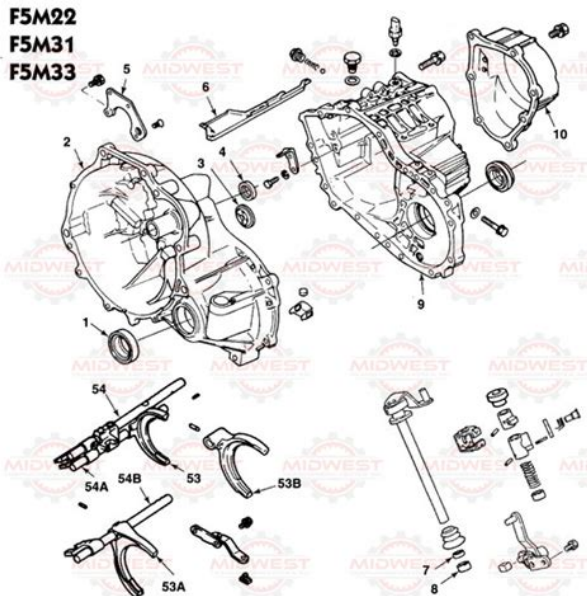


1. Adjusting nut
2. Connection for transaxle control cable
3. Connection for solenoid connector
4. Connection for park/neutral position switch connector
5. Connection for pulse generator connector
6. Connection for kickdown servo switch connector
7. Connection for oil temperature sensor connector
8. Connection for speedometer cable
9. Connection for oil cooler hose
10. Starter motor
11. Upper coupling bolt for transaxle assembly and engine assembly
12. Transaxle mount bracket

<http://www.bosport.be/newsletter/bose-wave-system-user-manual>

It is powered by manganese lithiumion batteries made by Japan Storage Battery, which have 65% reduced charging time over nickelhydrogen batteries. Drivetrain features of the new model include a 263 hp 196 kW 3.8 L MIVEC V6 for the GT trim, 2009 and newer models have 265 hp 198 kW. The GS has a 162 hp 121 kW 2.4 L MIVEC fourcylinder, both derived from the Mitsubishi PS platform family, with which the Eclipse shares many mechanical components. In Mexico, the GT Spyder is known as the Eclipse Convertible. In Canada, the GT trim is known as the GTP. Heated front seats. Heated side mirrors. Outside temperature indicator and compass in center dash display. Leather front seating surfaces. 6way power drivers seat. Heated front seats. Heated side mirrors. Aluminum pedals. Automatic climate control. Wind Deflector The displacement is 2378 cc, with a bore of 87 mm and a stroke of 100 mm. The engine runs 9.51 compression. Firing order is 1324. It uses 315 cc top feed high impedance injectors with a returnless fuel rail. It has a 62 mm throttle body. It has a 65 mm throttle body. The oil pump is a trochoid type. Downstream of these is a third catalytic converter placed mid way in the exhaust to assist in preventing further emissions. An option to add a dual exhaust and projector H.I.D. headlamps also became available. It is also built with a sunroof, leather interior, 650W Rockford Fosgate 9speaker audio system with Sirius XM, hands free Bluetooth phone interface, rearview camera, and HID headlights. The car was auctioned off by Mecum Auctions in St. The brake booster could separate due to improper crimp joints resulting in total brake failure. Brake fluid may bypass the seal and result in longer pedal stroke, and reduced braking pressure. This can cause internal valves to seize, resulting in sudden brake failure or reduced stopping ability. This could result in the fuel tank to come undone in a collision, and potentially cause a fuel leak.

<http://gerryikputuandpartners.com/images/canon-printer-s500-manual.pdf>



It was placed on grid number 74, at the back in last place. Some of engines produce as much as 650 hp 485 kW; 659 PS. They also have short transmission gears to accelerate into triple digit speeds. As of 2014, they hold the world record for the worlds fastest four cylinder. It has 1,600 hp 1,193 kW; 1,622 PS and is RWD. The sport compact was a cute little coupe with a lively personality, Retrieved 20 February 2018. Retrieved 26 December 2012. Retrieved 24 October 2010. Retrieved 24 October 2010. Retrieved 12 March 2011. Archived from the original on 6 April 2016. Retrieved 15 July 2019. By using this site, you agree to the Terms of Use and Privacy Policy. For the sport compact car, see Mitsubishi Eclipse. It was previewed by the XRPHEV and XRPHEV II concepts, revealed in 2013 and 2015. Unlike the Eclipse, however, the Eclipse Cross is not assembled in the United States, as Mitsubishi closed its DiamondStar Motors plant in Normal, Illinois in February 2016. Instead, the SUV is assembled in Japan. It was released in Japan on March 1, 2018. The Eclipse Cross in the market for Indonesia is only available in trim level Ultimate, in three exterior colour options Red Diamond, Silky White and Amethyst Black. The base model, ES, received redesigned sixteen inch alloy wheels and the model LE replaced the previous trim level SP. By using this site, you agree to the Terms of Use and Privacy Policy. It is used for the Endeavor, Galant, and Eclipse. You can help Wikipedia by expanding it. v t e By using this site, you agree to the Terms of Use and Privacy Policy. However, a minor conflict was forming as the Japanese now wanted to sell directly through their own branded dealerships. However, in 1991 the Japanese company purchased its partners interest, and thereafter the manufacture of Chrysler vehicles was on a contractual basis. In mid2012, the plant began producing the Mitsubishi RVR platform sold in United States as the Outlander Sport.

<http://antenasmunarriz.com/images/canon-printer-service-repair-manual.pdf>



Approximately 1,900 people work in the highly mechanized plant, alongside approximately 1,000

robots. The plant had been operating well below capacity for several years. In 2014, it produced just over 61,000 vehicles out of a capacity of 240,000 vehicles annually. Production would shift to Japan, with Mitsubishi importing all vehicles sold in North America. By using this site, you agree to the Terms of Use and Privacy Policy. We carry a wideranging catalog of used Mitsubishi transmissions for all applications including gas and diesel engines. Buy your used Mitsubishi transmissions from us and save time and money. Our used engines and transmissions are covered under a 1year warranty from the date of purchase, included for free! You will be surprised at the prices we quote, as we have a very large network of salvage yards in US. Also, local pickup is always allowed. Email me with any questions. I have been selling Auto parts for years and have satisfied many customers. If for any reason you are not satisfied, please contact me before leaving feedback and I will make it right. It will also fit a 9500 Dodge Avenger and Chrysler Sebring. Transmission came from a car with 120,000 miles on it and shifted great!!! Also, local pickup is always allowed. Email me with any questions. I have been selling Auto parts for years and have satisfied many customers. Email me with any questions. Once you receive your items, please leave me feedback and I will do the same for you. This allows me to know you received your item and were satisfied. If for any reason you are not satisfied, please contact me before leaving feedback and I will make it right. Email me with any questions. Check your application before bidding as there will be no refund for ordering for a vehicle that I do not guarantee fitment on. Read my feedback and bid with confidence. I have been selling Auto parts for years and have satisfied many customers. Email me with any questions.

Check your application before bidding as there will be no refund for ordering for a vehicle that I do not guarantee fitment on. Read my feedback and bid with confidence. I have been selling Auto parts for years and have satisfied many customers. Also, local pickup is always allowed. Email me with any questions. Check your application before bidding as there will be no refund for ordering for a vehicle that I do not guarantee fitment on. Read my feedback and bid with confidence. I have been selling Auto parts for years and have satisfied many customers. If for any reason you are not satisfied, please contact me before leaving feedback and I will make it right. Email for parts. I have too many parts to list on ebay. Check my other auctions and if you dont see what you need, email me and I may have it. Dont like the price I give you. Also, local pickup is always allowed. Email me with any questions. Check your application before bidding as there will be no refund for ordering for a vehicle that I do not guarantee fitment on. Read my feedback and bid with confidence. I have been selling Auto parts for years and have satisfied many customers. Email me with any questions. Check your application before bidding as there will be no refund for ordering for a vehicle that I do not guarantee fitment on. Read my feedback and bid with confidence. I have been selling Auto parts for years and have satisfied many customers. Email me with any questions. Check your application before bidding as there will be no refund for ordering for a vehicle that I do not guarantee fitment on. Read my feedback and bid with confidence. I have been selling Auto parts for years and have satisfied many customers. It was red, had about 65,000 miles on it, and a small ding in the drivers door. I took that car on a road trip that summer with my best friend, and found it much more reliable than I would have expected from an Eclipse.

<http://www.zulfugar.nl/wp-content/plugins/formcraft/file-upload/server/content/files/162805908ad060---Bry-air-dehumidifier-manual.pdf>

However, after about my second year of owning this car, it started to develop problems, such as the engine would overheat, the material on the seats wearing down, and a myriad of small issues of the like. I finally traded it in in 2003 for a 2002 Pontiac Firebird. As much as i loved my new car, I still missed that old Eclipse, and Im currently saving some money to try to find one thats in good condition to get that feel back that I got during that first summer with it. When I bought the car it held up to a 3 hour drive home, and ofcourse after that I did the maintenance fluids, belts and now its running top shape. Currently Im modding up the engine. The car has been reliable even when driven

full throttle. Excellent car by mitsubishi just as any of their performance cars.Ive owned mine since 2003, and to date Ive only had to replace the fuel pump, battery and a couple hoses. I do maintain it well. It had 72,000 original miles when I bought it and it just now hit 150,000. With ultra performance tires this car handles like a dream. Directional tread Hankook tires truly have helped with hydroplane issues which I had in the beginning. The infinity stereo system has been a big plus. The clear coat is just now wearing off exterior and I am planning to repaint this rare gem soon. Going back with the original Serano Red paint. I have had to replace the driver side exterior door handle twice, but overall its been an excellent car, and a fun to drive 5 spd.Mine averages about 3234 on highway and about 30 in the city. Excellent gas mileage for the performance. The exterior design was far ahead of its time, if they brought it back it would put Mitsubishi sales above Toyotas for sure. The interior wasnt comfortable, but the feeling of the components and the placement provide an awesome driving experience. The only problem that I had was the top leaked when the roof became saturated. It was the original roof and the car was ten years old.

I would suggest this car to everyone who wants to enjoy driving.I dont really like the automatic transmission that comes with the car but The 5 speed manual is amazing to drive the only problem about the 5 speed transmission is that is only 5 speed. The car feels like it needs another gear and you can feel it when you drive it on the freeway. So that one downside the other downside is it dose not have a lot of room space inside the car. But besides that it has never broken down on me and I drive about 60 miles every day with that car my car has about 142,000 miles and still has lots of power can see this car lasting over 200k miles but I probable wont get that far since the interior is just a lil too small for me.Even modern droptops will have problems. The 4G63 motor is stout and a beast when unleashed. But thats not all it can do. These cars could be fresh off the showroom floor today with their styling. 10 years later and they still look fresh. Interior is durable, the plastics held up well for the years of use. Fade is non existant. Styling is nice, but newer cars do show in this department. Everything is right within the drivers reach and ergonomical. Rear seats.well its a sport coupe AND a convertible. Even with top down their is considerable space their. All in all for what these cars go for they cant be beat.I didnt even get to get up to any kind of speed or anything. I found this out to be crankwalk anyone looking to buy a gst or gsx should research this first! I have purchased a new motor, but built it this time around with a 6 bolt from an earlier model turbo eclipse. I have goen through several alternators and a starter. Maybe my car is the christine, but it always needs some kind of attention to run right. Dont get me wrong its a blast to drive especially now that i have right around 320hp it just needs alot of attention and keep up with maintence. Do NOT buy one unless you have it checked out by a mechanic first would be my suggestion.Bought it for 1.

9K as a NE car with 140K on it. I LOVE driving it. Nothing better than driving a SLOW car FAST.Spend money on tires, and motor mounts, Then beat the crud outta them!!!I think the weakest part of the vehicle would be the comfort, however it is a small sporty car.But the Eclipse comes from the poorer, wannabe side of the tracks. Which is ironic. I tried all of the local auto salvages, aamco, napa, online.nobody carries for the spyder. The clutch and fly wheel for the 2.0L turbo and the 2.4L non turbo are interchangeable. Does that mean the trannys are as well Theyre different and it doesnt run right.or I would just rebuild. A. yes they are but you might need to change out the shifter cables on the manual but i am not sure on the auto Since someone said the turbo and the 2.4 are interchangeable tryYou would want a DSM FWD. These guys were also known for doing good workI tried all of the local auto salvages, aamco, napa, online.nobody carries for the spyder. The clutch and fly wheel for the 2.0L turbo and the 2.4L non turbo a. I have a 1998 Eclipse Spyder that I bought used. I need to locate two convertible top Thanks in advance. Deac The motor that works the antenna motion seems to be working fine, as I have opened the trunk and watched the motor. I dont see a full line, just a few holes and a 6 between two arrows. I am not used to a dipstick looking like this,. Please refer to CarGurus Terms of Use. Content will be removed if CarGurus becomes aware

that it violates our policies. We please to introduce our 1,500WHP Red Demon Spec Short Block, which is the answer you high horsepower Mitsu guys have been searching for! Whether you're using OEM gears Evo 3, Libertys Gears Face Plated option, or an aftermarket gearset like Pfitzner Performance Gearbox PPG, our Billet Bearing Housing is a piece that everyone making power through a manual transmission can benefit from. This is the perfect solution for every high horsepower 4G63 destroying their trans output shaft.

This product is for manual transmissions only. Seals are replaced, everything is reshimmed for high horsepower applications, and the bearings are replaced if needed. Other than the allwheeldrive model, this version of the Eclipse offers nothing you can't get for less money somewhere else. Although the coupe's wheelbase grew by 1.6 inches, it measured slightly shorter overall. Eclipse came in four models. The base RS, GS, and GST had frontwheel drive, while the topline GSX was equipped with allwheel drive. All models had 5speed manual transmission or optional 4speed automatic. The RS and GS used a 2.0liter 4cylinder engine. GST and GSX models used a turbocharged 4cylinder, rated at 205 or 210 horsepower. Antilock brakes were optional on all models. Whereas the GS coupe used a Chrysler 140horsepower, 2.0liter engine, the GS Spyder adopted a 2.4liter engine that made 141 horsepower. The GST Spyder, like the higherperformance coupe, got a turbocharged Mitsubishibuilt 2.0liter, rated at 210 horsepower. Both Spyders included a power top with a glass rear window and electric defroster, plus power windows and door locks. Turbo coupes got a higherprofile rear spoiler. Changes for '99 included whitefaced gauges on GSX and GST models and standard and optional equipment shuffles. A redesigned Eclipse appeared for 2000. The normally aspirated engine in RS and GS models developed 140 horsepower. A turbocharged 2.0liter engine went into GST and GSX models, making 210 horsepower 205 horsepower when equipped with an automatic transmission. Spyder GS convertible used a different engine 2.4 liters and 141 horsepower. A 5speed manual transmission was standard in all models, with 4speed automatic optional. Therefore, acceleration with the automatic transmission is marginal for freeway onramps and in passing sprints. Progress is livelier with the slickshifting 5speed manual gearbox. Turbos are decidedly faster. Unfortunately, Eclipse still suffers from some "turbo lag.

" On the downside, the ride turns choppy on freeways and rough roads, especially on turbocharged models. You also must endure plenty of road noise. Allwheeldrive models are capable of exhibiting race carlike moves, of the sort matched only by bigbuck coupes. The tiny back seat is strictly for preteens. The dashboard is well laid out, except for a centermounted stereo unit that's too low. Cargo space is adequate, but with a tall liftover for loading and unloading. Unfortunately, several convertibles we've driven have suffered from serious shakiness, even when rolling down smooth roads. With the exception of Value, these numbers reflect how the vehicle compares against the universe of vehicles, not just against rivals in its class. Lower is better Therefore, we recommend visiting websites that list used cars for sale to get a better idea of what a specific model is selling for in your area. Our editors test drive and thoroughly evaluate virtually every new car, truck, minivan, and SUV sold in America.

<http://www.diamondsinthemaking.com/content/bose-wave-system-user-manual>